

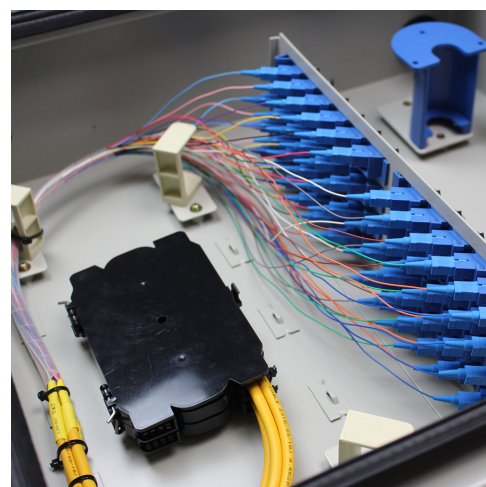
Distribution Terminal box: YTDB-2M96B

Overview

YTDB-2M96B fiber optics distribution cabinet is currently being widely used for distributing outdoor optical cable in indoor and outdoor conditions. It is very suitable for FTTx uses. This cabinet offers ideal environment for fibers to be spliced and well organized under outdoor environment.

Features

- The cabinet has functions of cable termination, splicing, distribution and cross-connection.
- Solid and fully closed structure with the advantages of good performance of dust-proof, pleasing and neat appearance.
- Two types: fillet type and square corner
- Easy installations: Wall mountable.
- Ideal for indoor uses – cable entrances & exits located on both top and bottom. Lock provided on every cabinet ensures the safety of the fibers.
- The central adapter board separates the incoming cables and the exiting fibers
- Central adapter board is movable for easier installation (for capacity over 48 cores.)
- Adapters are installed on our 6-position adapter holders, no screws need for installing any type adapters, which is very easy for future maintenance and keeps the transmission loss at low level.
- Adoptable adapter types: FC, SC, LC/Duplex and keeps the transmission loss at low level....



Dimensions and Capacity

Cabinet Type	Dimension (H x W x D) mm	Capacity FC/SC adapters	Capacity LC (Duplex) adapter
Square Corner	400×440×110	12	24
	460×480×125	24	48
	460×480×150	36	72
	460×480×150	48	96
	460×480×170	72	144
	460×480×220	96	192

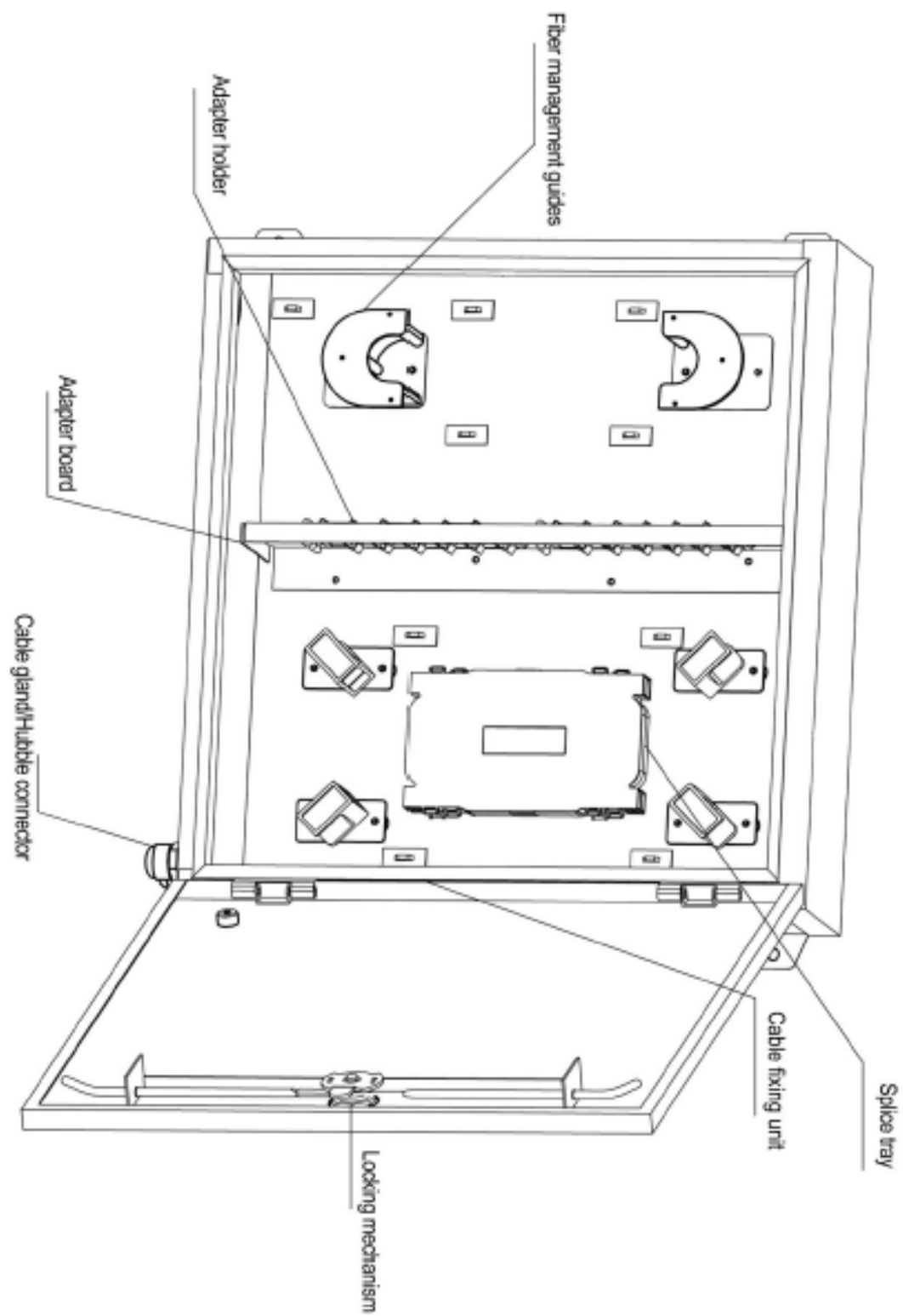
Operation Conditions

Temperature	Humidity	Air Pressure
-30°C - 75°C	≤90% (at 30 °C)	70kPa - 106kPa

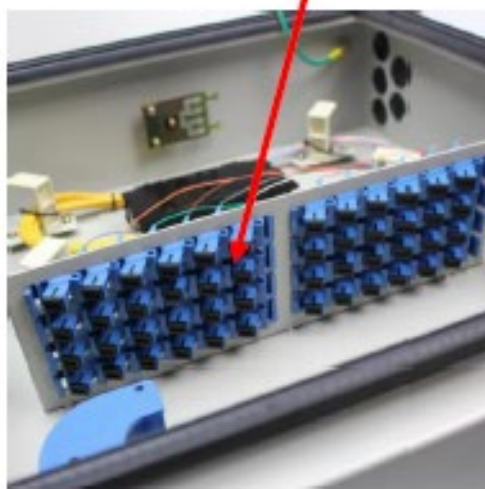
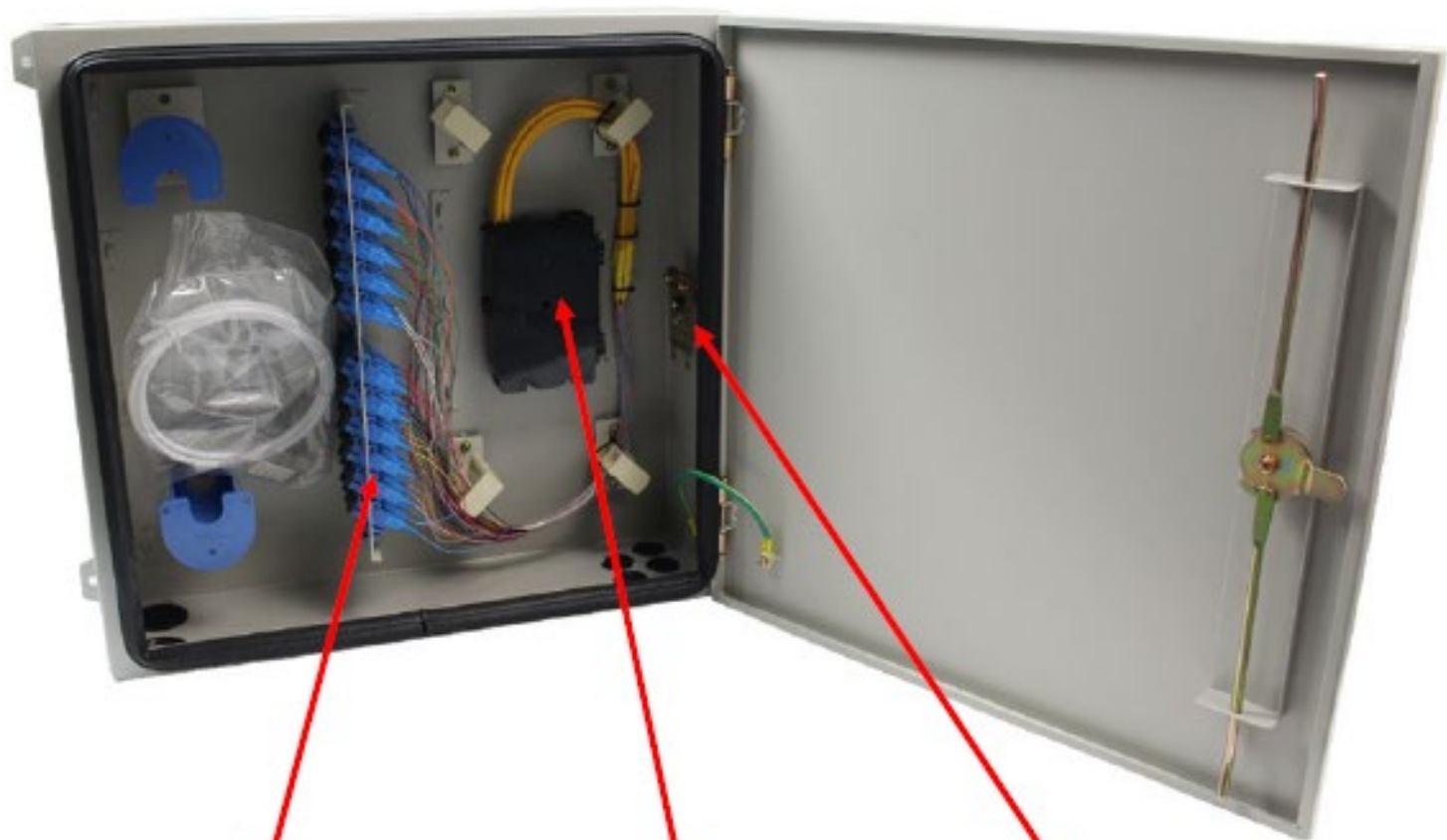
Packing

Package Contents	Material
Terminal box, 1 unit; Installation accessories, 1 set	Carton Box

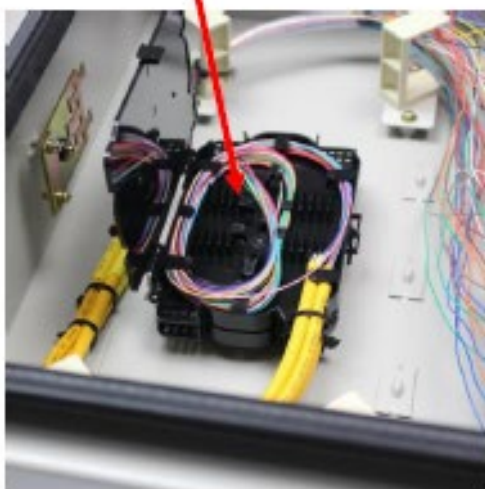
Technical Drawing



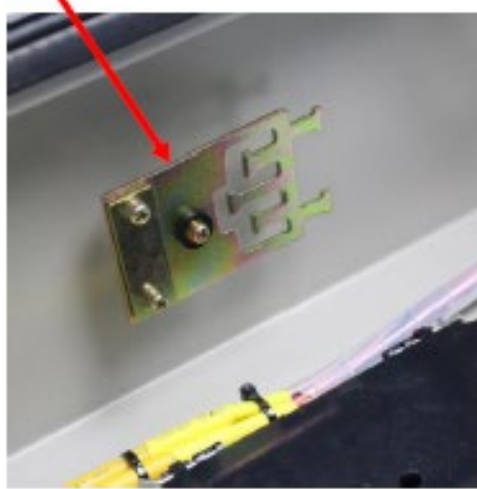
Part Details



Adapter board



Splice tray



Cable fixing unit

Catalog number

YTDB-2M96B



Connector Type
SU = SC UPC
SA = SC APC
LU = LC UPC
LA = LC APC
OO = Other*

Adapter Quantity
Enter the quantity required
N = No requirement

Fiber Type	
S = G652D	Single Mode
D = G655	
K = G656	
P = G657A1	
L = G657A2	Multi Mode
B = OM1 (62.5/125µm)	
G = OM1 (50/125µm)	
Q = OM2 (50/125µm)	
W = Om3	
Y = Om4	
O = Other*	
N = No requirement	

Fusion Tube
Y = Yes
N = No

Cable Color
Y = Yellow
B = Blue
W = White
O = Orange
G = Green
Z = Brown
S = Slate
R = Red
H = Black
P = Purple
F = Rose
A = Aqua
C = Color coded
N = No requirement

Pigtail Quantity
Enter the quantity required
N = No requirement