

Distribution Terminal box: YTDB-2M32A

Overview

YTDB-2M32A terminal box terminates up to 2 fiber optic cables, offers spaces for splitters and allocates 32 SC adapters and working under both indoor and outdoor environments. It is a perfect cost-effective solution-provider in the FTTx networks.

Features

- Metal material for the max strength.
- Easy installations: Ready for wall mount – installation kits provided.
- Ready for splitters: designed space for adding rack type splitters.
- Space saving! Double-layer design for easier installation and maintenance.
- Upper layer for splitters and distribution
- Lower layer for splicing
- Cable fixing units provided for fixing the outdoor optical cable.
- Accommodates both cable glands as well as tie-wraps
- Lock provided for extra security.



Dimensions and Capacity

Dimensions (H*W*D)	Weight	Adapter Capacity	Diameter of Cable Entrance	Diameter of Cable Exit	Optional Accessories
480 *360 *115 mm	10 KG	32 fibers with SC simplex adapters	Max diameter 28 mm per entrance	Max diameter 42 mm	Adapters, Pigtails, Splice Tray, Heat Shrink Tubes, Splitters

- Customized designs available upon request.

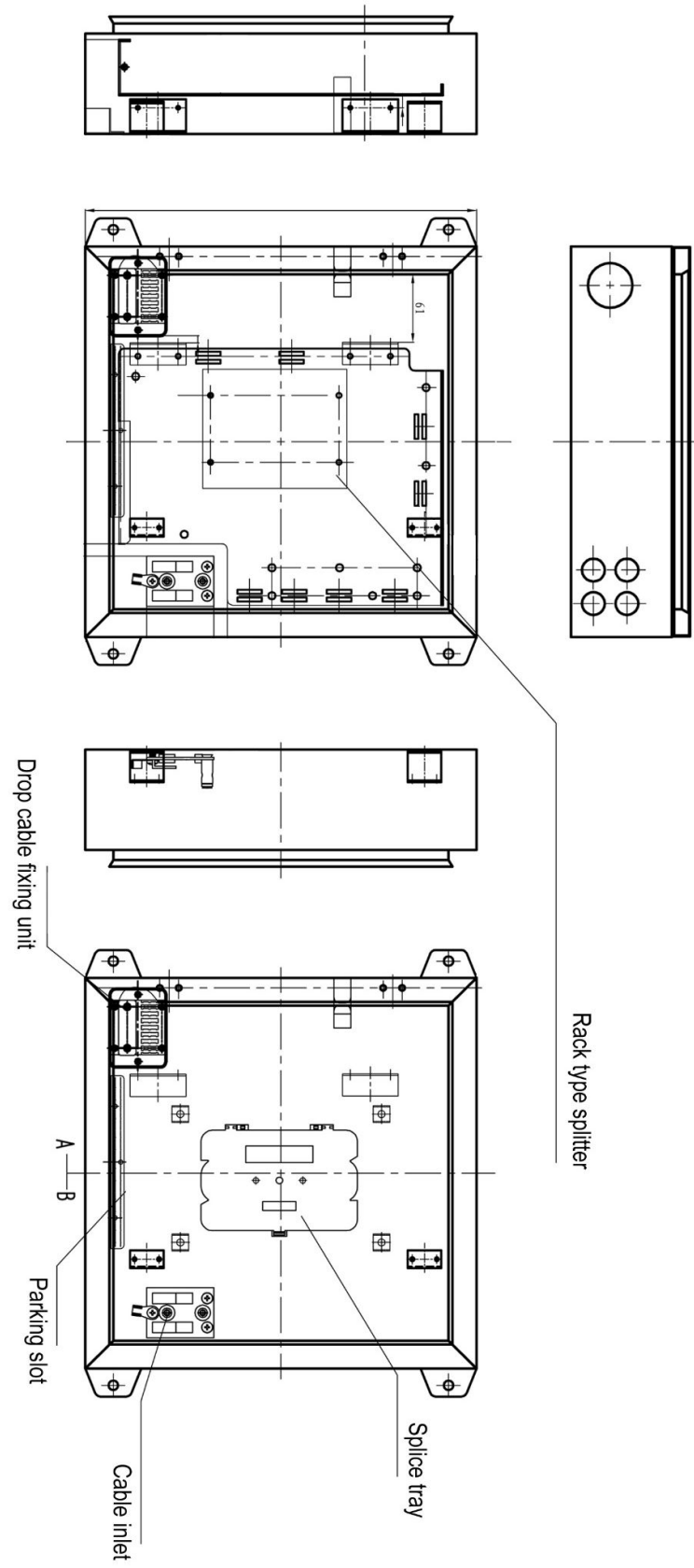
Operation Conditions

Temperature	Humidity	Air Pressure
-40°C -- 60°C	93% at 40°C	62kPa – 101kPa

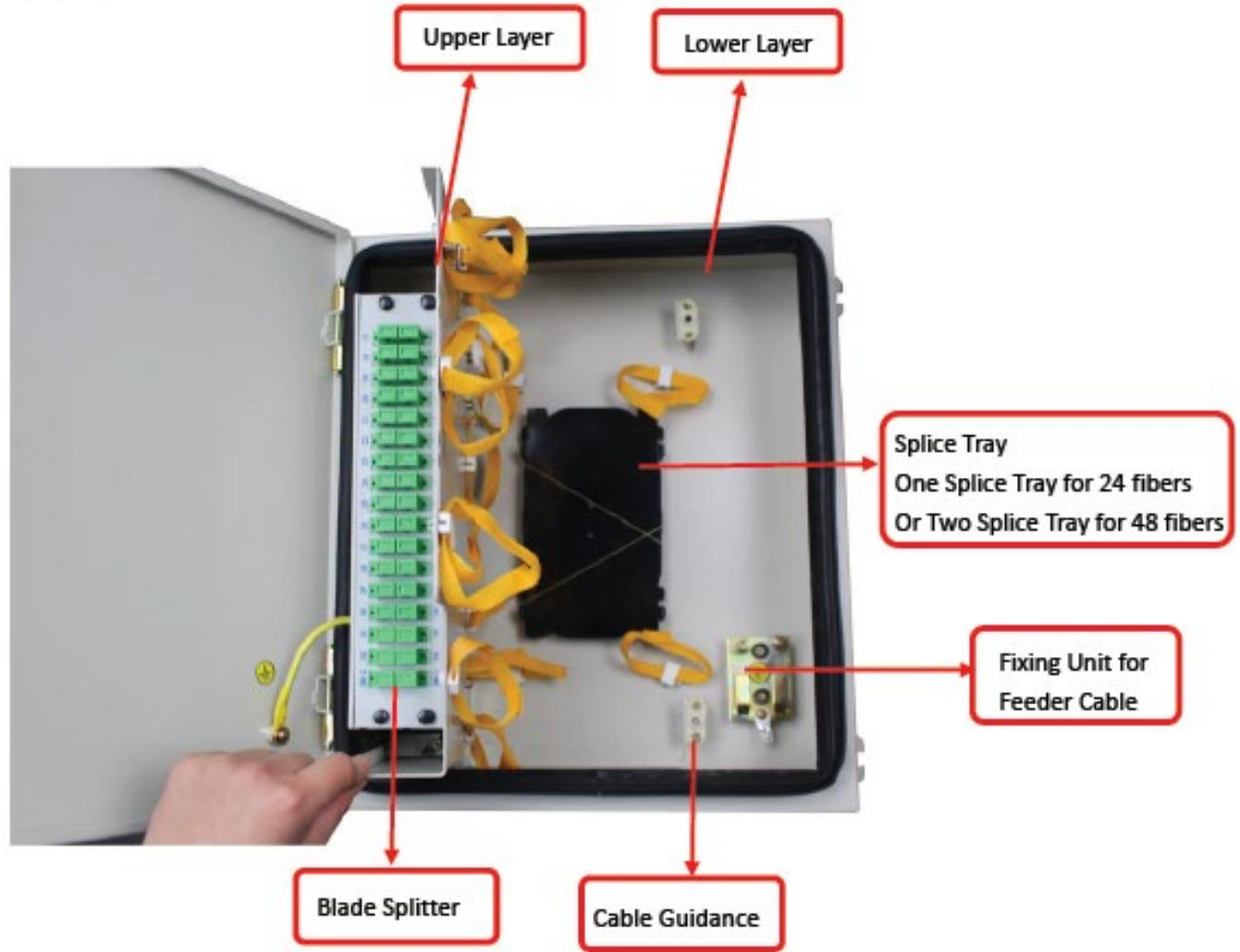
Packing

Package Contents	Package Dimensions(W*H*D)	Material	Weight
Terminal box, 1 unit; Keys for lock, 2 keys; Wall mount accessories: 1 set. Optional: fusion sleeves, pigtail protection tube, insulating tape, plastic strip, magic Velcro strip, and indoor cable sheath.	550*430*180 mm	Carton Box	13 KG

Technical Drawing



Part Details



2:32 Splitter Slot



One Cable Exit with diameter of 42 mm

Four Cable Entrances with diameter of 28 mm

Catalog Number

YTDB-2M32A 

Connector Type	
SU	SC UPC
SA	SC APC
LU	LC UPC
LA	LC APC
OO	Other*

Adapter Quantity	
Enter the quantity required	
N	No requirement

Fiber Type	
S = G652D	Single Mode
D = G655	
K = G656	
P = G657A1	
L = G657A2	Multi Mode
B = OM1 (62.5/125µm)	
G = OM1 (50/125µm)	
Q = OM2 (50/125µm)	
W = Om3	
Y = Om4	
O = Other*	
N = No requirement	

Fusion Tube	
Y	Yes
N	No

Cable Color	
Y	Yellow
B	Blue
W	White
O	Orange
G	Green
Z	Brown
S	Slate
R	Red
H	Black
P	Purple
F	Rose
A	Aqua
C	Color coded
N	No requirement

Pigtail Quantity	
Enter the quantity required	
N	No requirement