

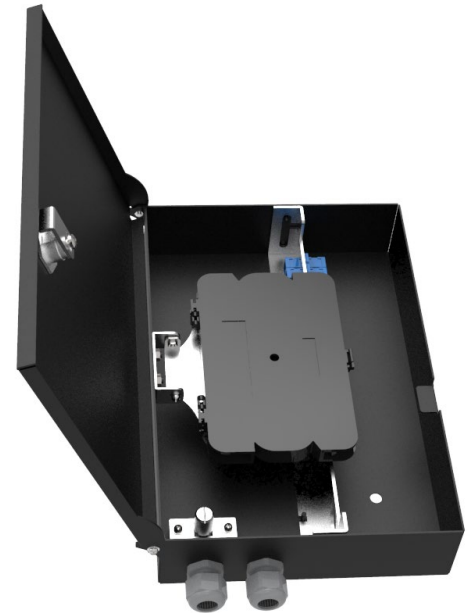
## Distribution Terminal box: YTDB-1M08A

### Overview

Wall mountable indoor splitter Box provides a flexible fiber management system for transitioning outside plant cable to inside cable and connector zed assemblies. Ensures professional splitting and branching of fiber based on bandwidth requirements with mechanical splitters on wall mountable applications and provides professional cable management. OSPW PLC Mini Type Splitter must be ordered separately. The splitters are available loaded with either LC or SC type adapters.

### Features

- The box has functions of cable termination, splicing, distribution and cross-connection.
- Solid and fully closed structure with the advantages of good performance of dust-proof, pleasing and neat appearance. 2:8 splitters can be put inside.
- Easy installations: Wall mountable.  
Lock provided on every box ensures the safety of the fibers.
- The central adapter board separates the incoming cables and the exiting fibers
- Removable adapter board for easy installation and operation
- Adapters are installed on our adapter board, no screws need for installing any type adapters, which is very easy for future maintenance and keeps the transmission loss at low level.
- Adoptable adapter types: SC, LC/Duplex



## Dimensions and Capacity

| Box Type      | Dimensions (W*D*H)mm | Capacity |
|---------------|----------------------|----------|
| Square Corner | 180×52×264           | 8 SC     |

- Customized design available upon request.

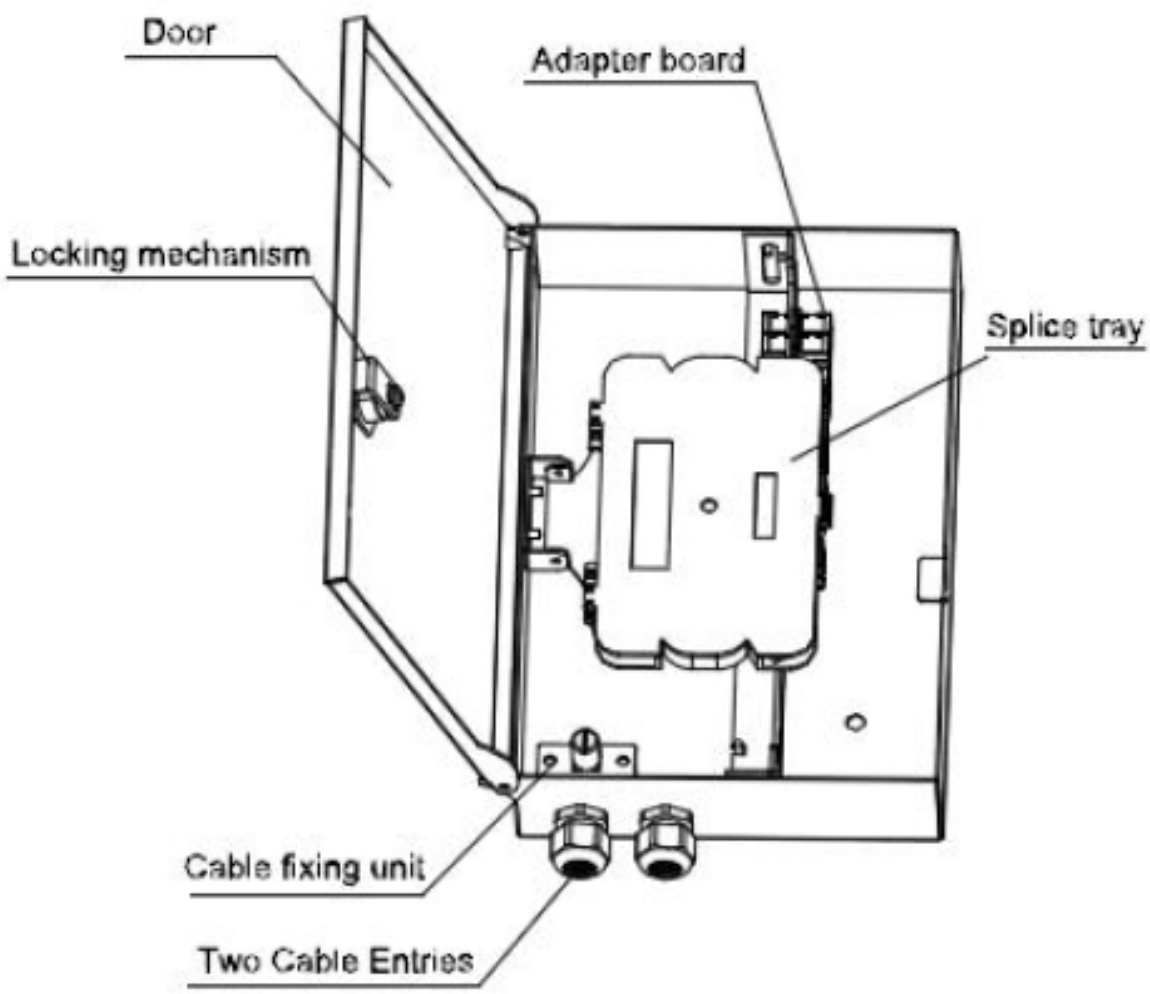
## Operation Conditions

| Temperature  | Humidity        | Air Pressure   |
|--------------|-----------------|----------------|
| -30°C - 75°C | ≤90% (at 30 °C) | 70kPa - 106kPa |

## Packing

| Package Contents                                      | Package Contents |
|---|------------------|
| Terminal box, 1 unit; Installation accessories, 1 set | Carton box       |

# Technical Drawing



Part Details

